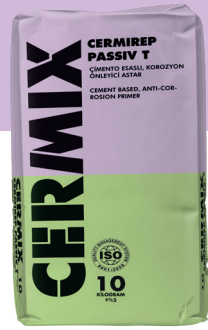


CERMIREP PASIV T

**CEMENT BASED, POLYMER REINFORCED,
ANTI-CORROSION, ADHESION-ENHANCING PRIMER MORTAR**



Grey



- *High adhesion strength to concrete and steel*
- *Resistant to water, moisture and chloride penetration*
- *Resistant to the effects of defrosting salts*

PRODUCT INFORMATION

WHERE TO USE

- Protection of concrete reinforcement from corrosion
- To increase adhesion strength by applying before repair mortars.

GENERAL FEATURES

Dry Density	: 1,4 ±0,10 g/cm ³
Mortar Density	: 2,00 ±0,10 g/cm ³
Colour	: Grey
Chemical Structure	: Cement-based grey powder with polymer additive.

TECHNICAL CHARACTERISTICS

Compressive Strength	: 40-60 MPa (EN 196-1)
Flexural Strength	: 5-10 MPa (EN 196-1)
Tensile Adhesion Strength	: 1,5-2,5 MPa (EN 1542)

(*)These values are obtained as a result of laboratory experiments and are the performance values of the finished applications after 28 days. These values may change depending on site conditions. 28 days 60-80 MPa (at 23 °C and RH60%)



STANDARDS AND DOCUMENTS

- Tested according to EN 1504-3 standards

PACKAGING

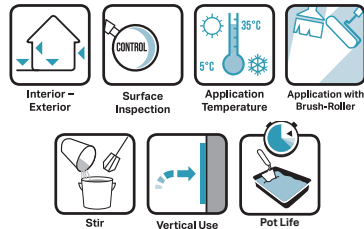
- 10 kg kraft bags (50 pieces on a pallet / 500 kg)

CONSUMPTION

- 1 liter of fresh mortar requires ~1.60 kg dry powder.
- As adherence mortar, ~1,5-2,0 kg/m² powder material is required.
- For reinforcement, ~ 4 kg/m² powder material is required for one coat as corrosion inhibitor (for 2 mm thickness).

STORAGE

- Maximum 10 kraft bags can be stacked on top of each other.
- It should be stored in a moisture-free and dry warehouse which is -well-protected against atmospheric conditions weather conditions.
- Shelf life is 1 year under proper storage conditions.
- Opened packages should be kept tightly closed.



APPLICATION

APPLICATION PROCEDURE

Application temperature : +5 °C ; +35 °C
Pot Life : 60 minutes (23 °C)

SUBSTRATE PREPARATION

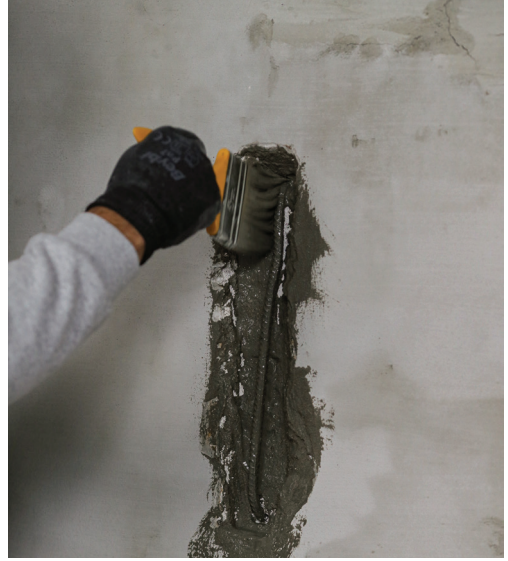
- Application surfaces must be free from dust, dirt, oil, etc. and dry, smooth and sound.
- Fixing the mold to be applied, It must be sealed and cleaned very well.
- The ambient temperature during product application should be between +5 °C and +35 °C.

APPLICATION

- 10 kg bag of material should be slowly poured into a container containing 2,2-2,6 liters of clean water (22-26%) and mixed with a low-speed (400 rpm) hand mixer for 3-4 minutes until it reaches a homogeneous consistency.
- The mortar should be rested for 2-3 minutes and then mixed again before application.
- **CERMIREP PASIV T** can be applied to all surfaces to be repaired using a steel trowel.

RECOMMENDATIONS

- Do not apply it on frost hazardous or overheated surfaces, under direct sunlight and in windy weather.
- If petrification is detected after opening the bags, the product should not be used
- The product should be used within the life of the container after mixing.
- No foreign materials such as lime, cement or gypsum should be added into the mortar.
- Amount of water indicated on the bag should be observed.
- The applied surface should be moistened for 1-2 days, direct sunlight, wind, frost, etc. effects should be protected.
- Protect the applied surfaces against direct sunlight, rain and frost for at least 24 hours.
- Do not apply on new plastered or concrete surfaces before the curing time is completed.



SAFETY INSTRUCTIONS

- As it is cement based, do not inhale and avoid of its contact with skin and eyes.
- It is recommended to use appropriate work equipment (gloves, goggles, mask, knee pads, etc.) during application of the product.
- For more detailed information please read the Material Safety Data Sheet (MSDS)

Note: Technical values and application instructions are valid under ambient temperature of 23°C with relative humidity 50% and they are the results of our tests and experience in accordance with international standards. Our company is not responsible for any errors that may occur if the instructions and recommendations specified in the technical data sheets are not followed.

CERMIX

CERMIX Produced by Koramic Yapı Kimyasalları under license of Cermix SA. www.cermix.com.tr * www.koramic.com.tr

Head Office
 Koramic Yapı Kimyasalları San. Tic. A.Ş.
 E-5 Karayolu Üzeri, Şifa Mah. Hükümet Cad.
 Tuzla 34941 İstanbul / TÜRKİYE
 Phone: +90.216.423 34 33 • Fax: +90.216.423 53 63

Bozüyük Factory
 Bozüyük Organize San. Böl. 10. Cad.
 106 Ada / 5 Parsel No: 3 Bozüyük - BİLEÇİK / TÜRKİYE
 Phone: +90.228.314 63 00
 Fax: +90.228.314 63 0

Tarsus Factory
 Huzurkent Tarsus Organize Sanayi Bölgesi
 13. Cadde No: 10 Tarsus - MERSİN / TÜRKİYE
 Phone: +90.324.676 40 41-676 42 32-676 44 49
 Fax: +90.324.676 40 47