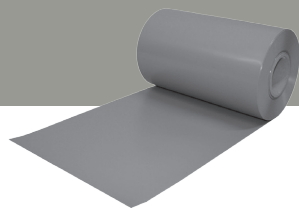


CERMITAPE FPO 2 MM

FLEXIBLE POLYOLEFIN (FPO) BASED DILATATION AND WATERPROOFING TAPE



Grey

- **High adhesion**
- **High elasticity**
- **Chemical resistance**
- **Resistant to weather conditions and water**
- **Root resistant**
- **UV-resistant**
- **Plasticiser-free**
- **Suitable for contact with drinking water**
- **Expansion joint**

PRODUCT INFORMATION

WHERE TO USE

- Balconies, terraces, parapets
- In areas with permanent wet volumes such as pools, water tanks, etc.
- In tunnels, foundation-curtain walls
- In wall-floor joints, expansion joints

GENERAL FEATURES

Chemical structure : Flexible Polyolefin (FPO)
Width : 250 mm
Colour : Grey

STORAGE

- Do not open the package in dry and moisture-free environments and it is 12 months from the date of production provided that it is not damaged.
- If packaging film has been opened apply the material within 2 months

STANDARDS AND DOCUMENTS

- Tested according to DIN EN ISO 9001:2015

PACKAGING

- One roll 20 meters, 5 rolls per carton



Interior - Exterior



Surface Inspection



Application Temperature

TECHNICAL CHARACTERISTICS

| | | |
|--|----------|---|
| Tear Resistance - Lengthwise | 9,8 Mpa | (DIN EN 12311-2, Metot B) |
| Tear Resistance - Across | 8,9 Mpa | (DIN EN 12311-2, Metot B) |
| Elongation at break - Lengthwise | %1000 | (DIN EN 12311-2, Metot B) |
| Elongation at break - Across | %1100 | (DIN EN 12311-2, Metot B) |
| Tear Resistance(nail shank) - Lengthwise | 600 N | (DIN EN 12310-1) |
| Tear Resistance(nail shank) - Across | 650 N | (DIN EN 12310-1) |
| Water vapour permeability | 180 m | (DIN EN 1931, Metot B) |
| Shore A Hardness | ca. 87 | ≥500 hours |
| Bonding Strength | ≥3,0 Mpa | (DIN EN 1348) |
| Peel test on Wood Carrier | ≥100 N | |
| Water Tightness | | (DIN EN 1928-A-60 kPa /24 hours (DIN EN 1928-A-400 kPa /72 hours |
| Burst Pressure | ≥4,0 bar | |
| UV-Resistance | ≥6500 h | |
| Reaction to Fire | Class E | (DIN EN 11925-2, EN 13501-1) |

(*)These values were obtained as a result of laboratory tests and are the performance values of the finished applications after 28 days. Values may vary due to the difference in the construction site environment.

CERMITAPE FPO 2 MM

APPLICATION

APPLICATION PROCEDURE

Thickness : 2 mm

Total weight : 1020 g/m²

Length per roll : 20 m

Resistance to temperature: -30 °C / + 90 °C

SUBSTRATE PREPARATION

•In dilatation joints, care should be taken to ensure that the internal and external surfaces are solid, dry, dust-free and clean, in balance and smooth.

•The surface should be free of all kinds of oil, grease, rust and paraffin residues that may adversely affect adherence and there should be no loose particles on the surface. Surface defects should be repaired with **CERMIREP R4 T**.



APPLICATION

•**CERMITAPE FPO** is adhered with special adhesive mortar on both sides, reinforced with polypropylene carrier.

•**CERMITAPE FPO** can be easily and quickly applied to any crack or dilatation joint, it does not require any special equipment.

•A hot air welding tool is required for splicing tape rolls end to end.

SAFETY INSTRUCTIONS

•Users should refer to the material safety data sheet (MSDS) of the product, which includes and safety-related information, for information and advice on the safe transport, storage and disposal of chemical products.

Note: Technical values and application instructions are valid under ambient temperature of 23°C with relative humidity 50% and they are the results of our tests and experience in accordance with international standards. Our company is not responsible for any errors that may occur if the instructions and recommendations specified in the technical data sheets are not followed.

CERMIX

CERMIX Produced by Koramic Yapı Kimyasalları under license of Cermix SA. www.cermix.com.tr * www.koramic.com.tr

Head Office
Koramic Yapı Kimyasalları San. Tic. A.Ş.
E-5 Karayolu Üzeri, Şifa Mah. Hükümet Cad.
Tuzla 34941 İstanbul / TÜRKİYE
Phone: +90.216.423 34 33 • Fax: +90.216.423 53 63

Bozüyük Factory
Bozüyük Organize San. Böl. 10. Cad.
106 Ada / 5 Parsel No: 3 Bozüyük - BİLEÇİK / TÜRKİYE
Phone: +90.228.314 63 00
Fax: +90.228.314 63 0

Tarsus Factory
Huzurkent Tarsus Organize Sanayi Bölgesi
13. Cadde No: 10 Tarsus - MERSİN / TÜRKİYE
Phone: +90.324.676 40 41-676 42 32-676 44 49
Fax: +90.324.676 40 47